



LANE NO. 2, LUXMI INDUSTRIAL PARK,  
SAIDPURA, DERA BASSI MOHALI, PUNJAB,  
140507  
BUSINESS HOURS  
9AM - 8PM  
MONDAYS TO FRIDAYS

JOURNEY MADE PERFECT

IGWT GLOBAL



BUSINESS SERVICES PROVIDER

Be it face to face , B2B or B2C, we mould relationships  
that bond businesses and commitments.







JOURNEY MADE PERFECT



### Non-Medical Mask

- Mask Non woven
- Mask Earloop&Nose wire
- KN95 Mask
- N95 Mask
- Disposable Mask

### Polypropylene Nonwoven Fabric

- PP Spunbond Nonwoven Fabric
- SS Nonwoven Fabric
- SSS Nonwoven Fabric
- SMS Nonwoven Fabric

### Nonwoven Bags (Ecobags)

- T-Shirt Nonwoven Bag
- D-Cut Nonwoven Bag
- Tote Nonwoven Bag
- Other Nonwoven Bag

Creating a like minded community of  
**Medical Textiles & Medical Devices**

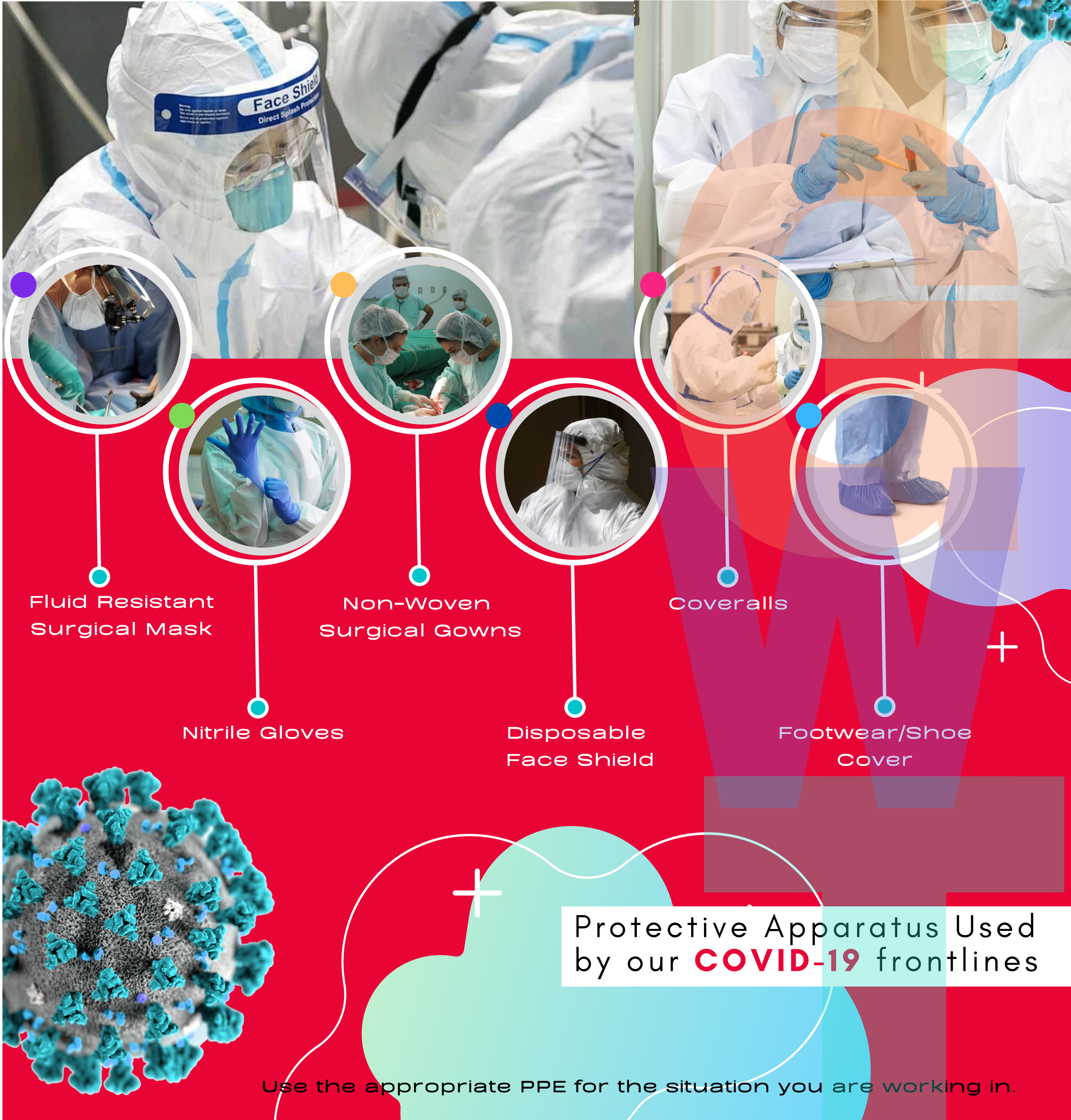
Be it face to face , B2B or B2C, we mould relationships  
that bond businesses and commitments.

[www.igwtge.com](http://www.igwtge.com)



# Our Commitment to contain COVID-19

We are working with some of the best Healthcare Textiles & Equipment Manufactures to bring to you the best **Personal Protective Apparatus**



Protective Apparatus Used by our **COVID-19** frontlines

Use the appropriate PPE for the situation you are working in.





## DISPOSABLE FACE MASK

Disposable Face masks, also called procedural masks when worn outside the operating room



DISPOSABLE FACE MASK

COLOURS AVAILABLE ON BULK ORDERS ONLY

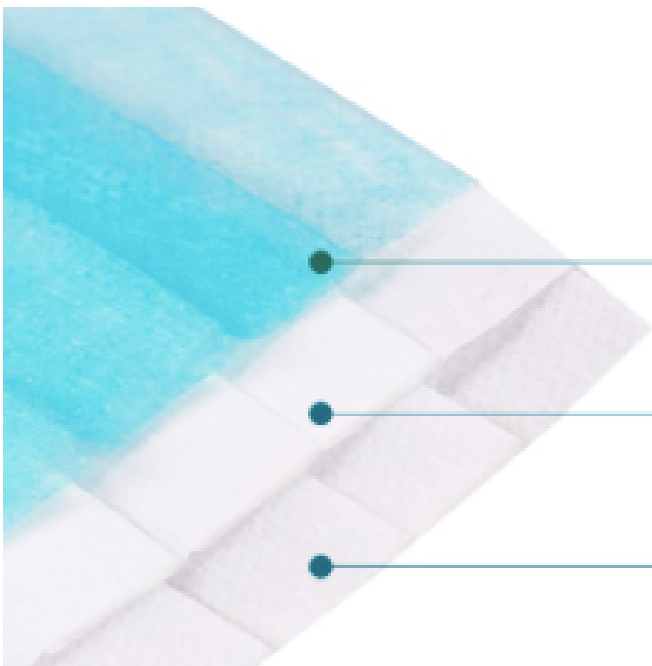
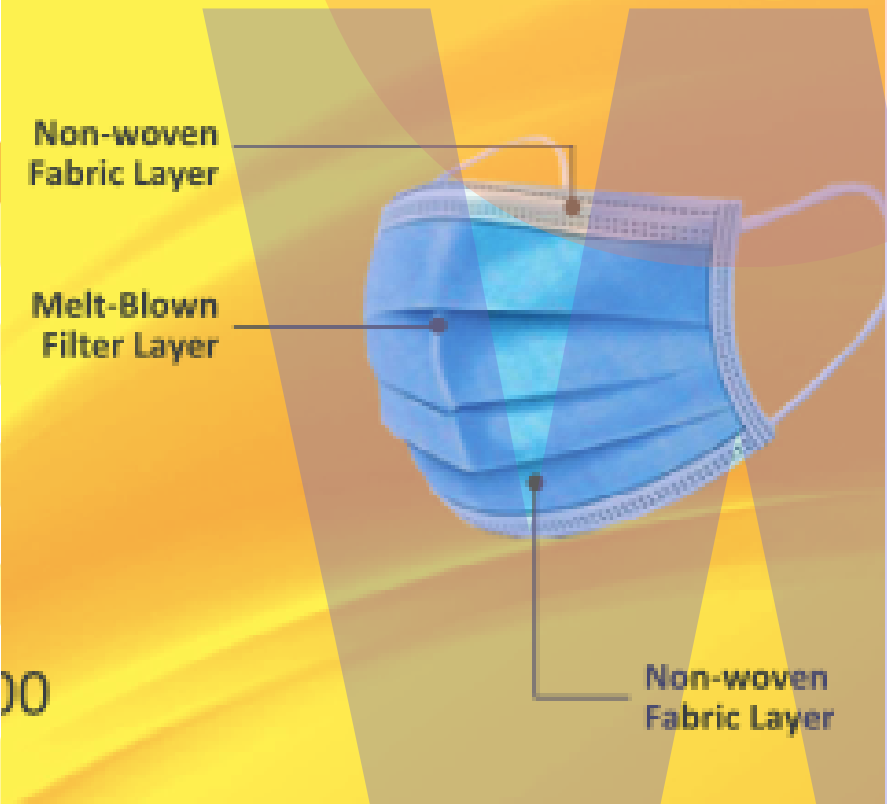


A surgical mask is a loose-fitting, disposable device that creates a physical barrier between the mouth and nose of the wearer and potential contaminants in the immediate environment.

RATIONAL FOR THE USE OF DISPOSABLE 3 PLY FACE MASK

-  High Bacterial Filtration Efficiency (BFE)
-  Easy Breathing
-  Antimicrobial and Splash Resistant
-  Soft & Comfortable

Product	(RC104) 3 Layer Surgical Face Mask
Fabric of Outer and Inner Layer	Anti-Microbial PP Spunbond Non-Woven Fabric
Fabric of Middle Layer	Meltblown Non-Woven Fabric
Ear loop Type	Elastic Earloop with Ultrasonic
Type	With Nose Strip
Dimensions	175 mm X 95 mm (+/- 5 mm)
GSM	25 X 3 = 75 GSM
Colour of layers	M.Blue + White + M.Blue
Bacterial Filtration Efficiency (BFE) (ASTM : F2101 – 2019)*	> 99 %
Particulate Filtration Efficiency (PFE) ASTM F2299/F2299M-03 (2010)*	> 95 %
Splash Resistance (ASTM F1862/F1862M-13)* Result at 160mm Hg	Pass (High Barrier)
Differential Pressure (IS 16289:2014 Annex C)*	< 29.4 Pa/cm2
Flammability (16 CFR Part-1610)*	Class I



3-layer of Defense

- PP non-woven fabric
- Polypropylene melt-blown non-woven fabric
- PP non-woven fabric





EAR LOOPS

FILTRATION  
PAPER LAYER

NON-WOVEN  
OUTER LAYER

NON-WOVEN  
INNER LAYER

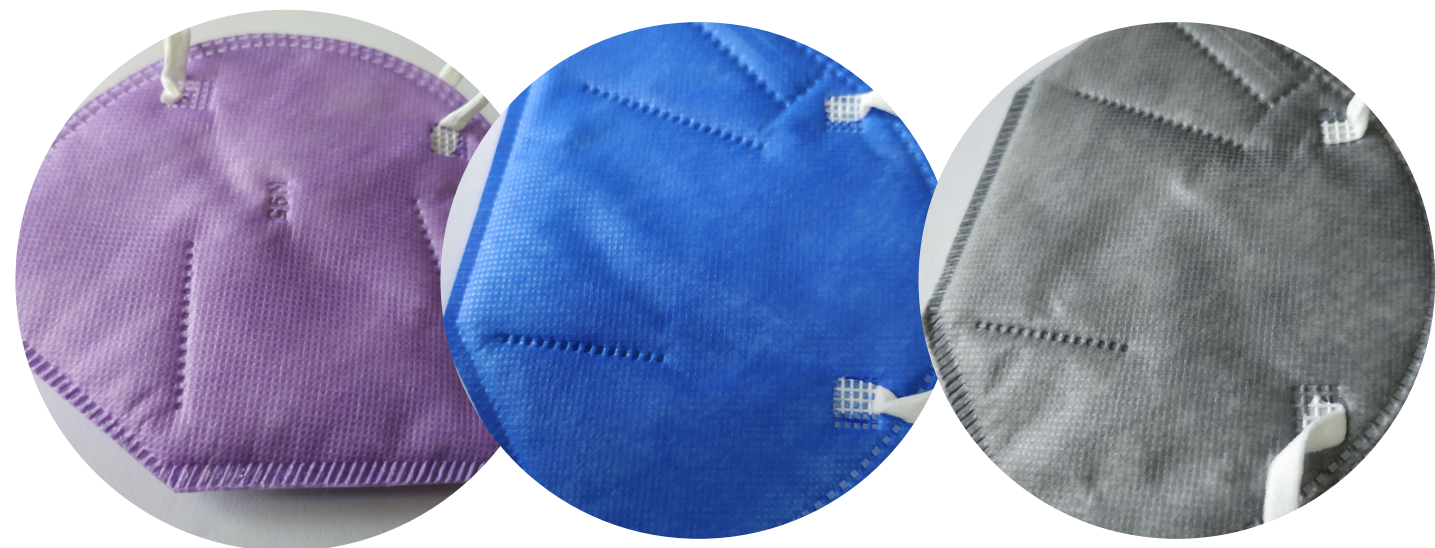
3 LAYER OF DEFENCE  
MECHANISM

PP NON WOVEN FABRIC

POLYPROPYLENE MELT-BLOWN  
NON WOVEN FABRIC

PP NON WOVEN FABRIC





ADULTS



KIDS



## N95 Design RESPIRATOR

A new type of industrial & medical dust proof  
folding respirator.  
**Available with & Without Valve**



## N95 DESIGN - FILTER COMPONENTS

## N95 Design RESPIRATOR



Our N95 Design Facemask are respiratory protective devices designed to achieve a very close facial fit and very efficient filtration of airborne particles.



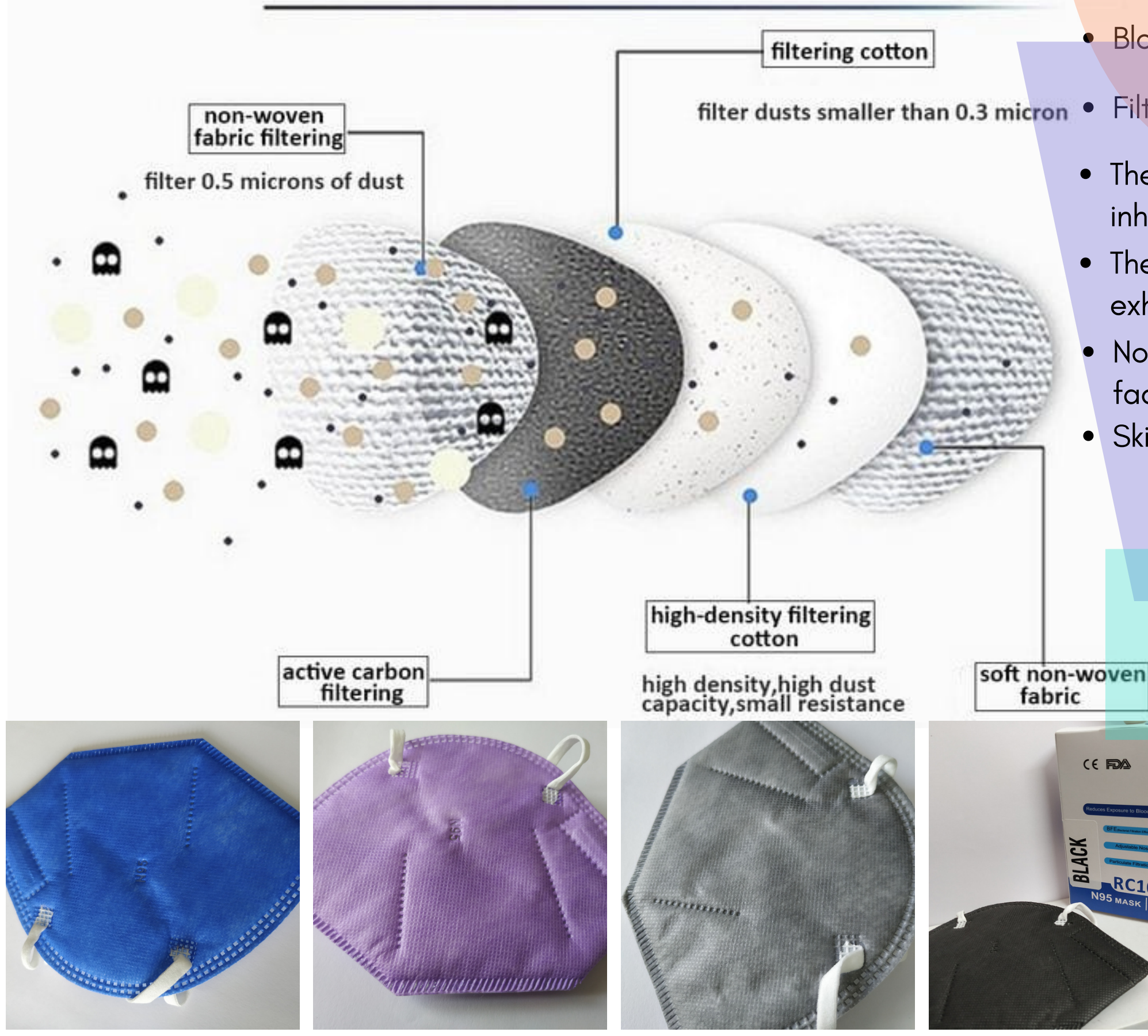
Note that the edges of the respirator are designed to form a seal around the nose and mouth



When subjected to careful testing, our respirator blocks at least 95 percent of very small (0.3 micron) test particles. If properly fitted, the filtration capabilities of N95 respirators exceed those of face masks.

It is important to recognize that the optimal way to prevent airborne transmission is to use a combination of interventions from across the hierarchy of controls, one such intervention is the OLGA & Orion N95 Design Respirator/Mask

## RATIONAL FOR THE USE OF N95 DESIGN RESPIRATOR



- Block free breathing layer by layer
- Filter Particles upto 95%
- The breathing valve opens when inhaling
- The breathing valve closes when exhaling
- Nose-Tip Shaping - fit a variety of face shape
- Skin Friendly



**NABL**  
ISO / IEC 17025  
Accredited



Blue



Purple



Grey



Black



White



A person wearing a blue lab coat and blue nitrile gloves is using a surgical instrument, possibly a grasper, to hold a cylindrical object. The background shows a factory or warehouse setting with various equipment and materials.

## DISPOSABLE INDUSTRIAL GLOVES

Surgical gloves have more precise sizing with a better precision and sensitivity and are made to a higher standard.



## DISPOSABLE INDUSTRIAL GLOVES

Industrial use Nitrile Gloves are Ideal hand protection for workers for multi-purpose industrial use. Disposable Industrial use Nitrile Gloves are used extensively in manufacturing and production facilities in the chemicals industry, electronics industry, paint and coatings industry, printing and dyeing industry, and various other industrial use and processes, which require additional protection for workers and their products. These include the biotechnology, pharmaceutical, medical device, and special packaging industries.



To reduce the risk of germ dissemination to the environment and of transmission from the health-care worker to the patient and vice versa, as well as from one patient to another.



Powder & Latex Free

More Resistant to Oils & Chemicals

Superior Strength for long lasting

CE Certified

Comfortable easy on and off design



NITRILE DESIGN

More resistant to  
oils, chemicals  
and acids.

Comfortable,  
easy

ON & OFF DESIGN

Crafed from  
DURABLE SYNTHETIC  
POLYMER

SUPERIOR STRENGTH

for long lasting wear



GLOVE SIZE CHART

Measure the circumference of your hands  
just below the knuckles

UNISEX

6.0"-6.5"	6.5"-7.0"	7.0"-7.5"	7.5"-8.0"	8.0"-8.5"	8.5"-9.5"	9.5" +
NA	XS	S	M	L	XL	XXL





## DISPOSABLE SURGICAL GOWNS

Suitable for Isolation & basic protection  
from bacteria and particulate.

# DISPOSABLES



# DISPOSABLE COVERALLS

Disposable Isolation Clothing: Available  
with Sealing Strip & without Sealing Strip





DISPOSABLE  
COVERALLS



"Controlling a hazard at its source is the best way to protect employees. Depending on the hazard or workplace conditions...."

**The Occupational Safety & Health Administration (OSHA)**



"The people most at risk of infection are those who are in close contact with a COVID-19 patient...."

**World Health Organisation (WHO)**



"The type of PPE used will vary based on the level of precautions required, such as standard and contact, droplet or airborne infection"

**Certified for Disease Control & Prevention (CDC)**



"Employers have duties concerning the provision and use of personal protective equipment (PPE) at work"

**Health & Safety Executive (HSE)**

These protective garments are available in single layer spun-bond polypropylene (SPP) for basic coverage. Each and every Coverall features a waist belt and latex free elastic cuff and a velcro tape tab on the neck.

RATIONAL FOR THE USE OF COVERALLS



Designed to protect torso of healthcare providers from exposure to virus

Made from lightweight and extremely breathable material and is designed to offer protection against hazardous dusts and limited liquid splashes.

By using appropriate protective clothing, it is possible to create a barrier to eliminate or reduce contact and droplet exposure, both known to transmit COVID-19



Suitable for isolation & protection from bacteria, particulate, etc.



The Whole Ring of the Cap is tight



Latex Free



Latex Free









## DISPOSABLE SHOE COVER

In hygiene-sensitive areas, such as cleanrooms, disposable overshoes are indispensable.





# DISPOSABLE SHOE COVER



"Shoe covers may be used over street shoes to protect clean areas from soil and dirt brought in"

**Ministry of Health & Family Welfare, India (MOHFW)**



"Wear shoe covers to provide a barrier against possible exposure to airborne organisms or contact with a contaminated environment."

**Minnesota Department of Health (MDH)**



"Shoe and boot covers are rigorously tested and manufactured in an ISO Certified facility under stringent process controls."

**Certified for Disease Control & Prevention (CDC)**

It's very important to consider the environment you'll be working in when deciding on which protective shoe covers to use. Shoe covers prevent tracking of substances around the building or workspace.

## RATIONAL FOR THE USE OF DISPOSABLE SHOE COVER

Disposable shoe covers can be simply thrown away after leaving a work environment. This drastically reduces the risk of cross-contamination.

Shoe covers provide a physical barrier between these materials, individual footwear remains cleaner

Employees wearing shoe covers are less likely to require time away from their required job duties in order to clean or change soiled footwear.



Water Resistant

Waterproof

Anti-Skid

Elastic ankle strap

Dust Proof





POLYESTER FABRIC,  
NON WOVEN FABRIC,  
COTTON YARN, SPUN  
YARN

TECHNICAL TEXTILE PRODUCTS

# TECHNICAL TEXTILES

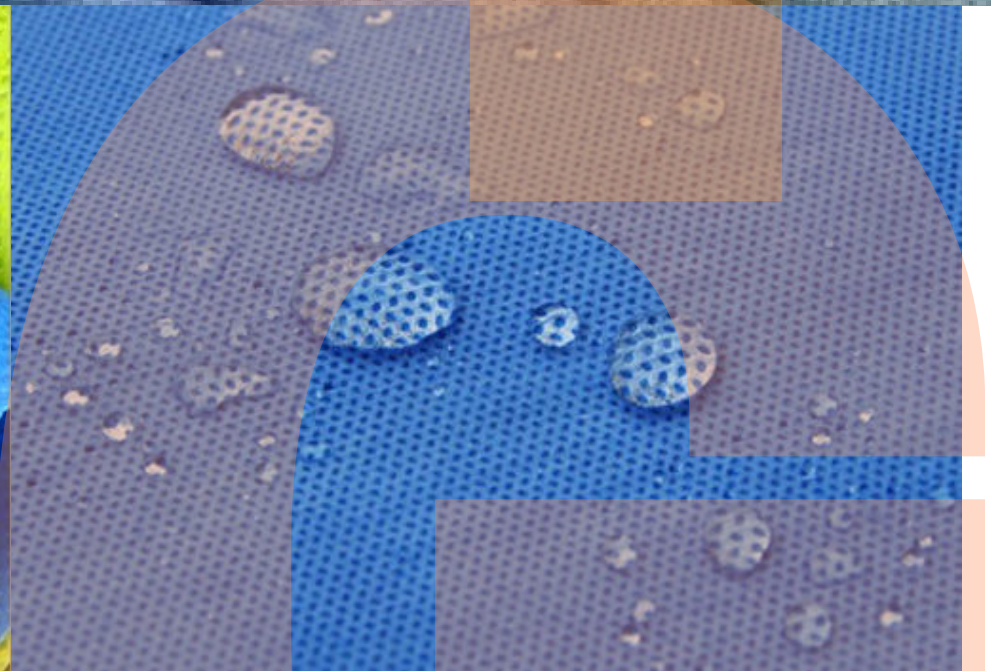
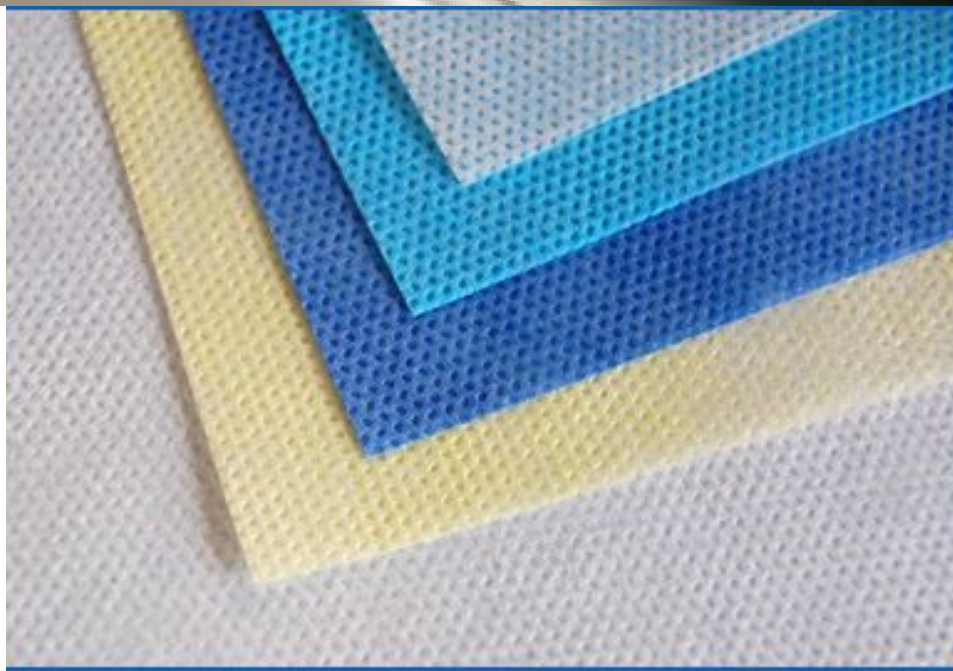




# PP SPUN BOND NON WOVEN FABRIC

MEDICAL & NON-MEDICAL  
GRADE FABRIC

**GSM 7- GSM 260 AVAILABLE**



ASSURANCE OF CHARACTERISTICS LIKE STRENGTH, AIR-PERMEABILITY & SOFTNESS

RATIONAL FOR THE USE OF **PP NON-WOVEN FABRIC**

PP Spun Bond Non Woven fabric is also available for Medical and Healthcare use like disposable gowns, masks, caps, gloves, diapers etc

## SSMMS, SMMS, SSS, SMS

As the most trustworthy single point source of these products such as SMS Nonwoven Fabric, PP Woven polypropylene fabric, PP / PET Spunbond Nonwoven, SSMMS Nonwovens Fabric

- **PP Spunbond Nonwovens**
- **PET Spunbond Nonwovens**
- **Spunlace Nonwovens**
- **Polyester Nonwoven Fabric**

- **Bico Nonwoven**
- **PP Needle-punch Nonwoven**
- **PET Needle-punch Nonwoven**



Surgical Mask



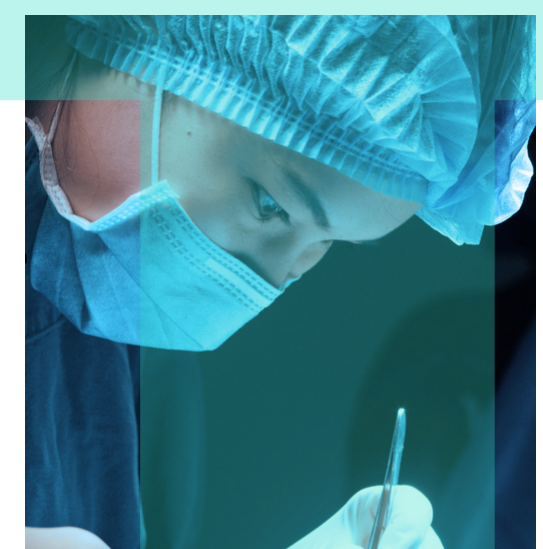
Surgical Face Mask



Gowns



Shoe Covers



Head Cover





## IGWT GLOBAL ENTERPRISES

Lane No.2 Luxmi Industrial Park, Saidpura,  
Derabassi, Mohali, Punjab  
Pincode: 140507

Contact Us: +91-9910910689, +91-9988821112,  
+91-9216144577



### MEDICAL DEVICES DIVISION

Email Us: [igwt-gsieoutlook.com](mailto:igwt-gsieoutlook.com),  
[igwtge.agro@gmail.com](mailto:igwtge.agro@gmail.com)



### TECNICAL TEXTILE DIVISION

## OUR LEADERSHIP TEAM:



**MR. AMAL KUMAR TIWARI**  
CO-FOUNDER & BOARD MEMBER  
BUSINESS DEVELOPMENT  
TECHNICAL TEXTILES  
Contact at: (921)-614-4577  
Email: [amal.igwt-gsieoutlook.com](mailto:amal.igwt-gsieoutlook.com)  
**INDIA / ASIA / UAE**



**MR. BERNARD A EKOH**  
DIRECTOR BUSINESS DEVELOPMENT  
MEDICAL & SURGICAL DEVICES ,  
FASHION APPAREL, TECHNICAL TEXTILES  
Contact at: (991)091-0689, (998)88-21112  
Email: [igwt-gsieoutlook.com](mailto:igwt-gsieoutlook.com)  
**INDIA / AFRICA / EUROPE / USA**

## OUR GLOBAL ASSOCIATES:

### MR. MICHAEL EKOH

SALES PARTNER  
MEDICAL DEVICES & FASHION APPAREL  
DUBLIN, IRELAND  
**IRELAND/UK**

### MS. OLUBUKOLA IPAYE

SALES PARTNER  
MEDICAL DEVICES & FASHION APPAREL  
DUBAI, UAE  
**USA/WEST AFRICA**

### MS. CHERRY LEE

SALES PARTNER  
MEDICAL DEVICES & TECHNICAL  
TEXTILES  
DUBAI, UAE  
**DUBAI/QATAR**

### MR. ANWAR IMRAN

STRATEGIC BUSINESS PARTNER  
MEDICAL DEVICES & TECHNICAL  
TEXTILES, BUSINESS DEVELOPMENT  
TRENTO, ITALY  
**EUROPE**



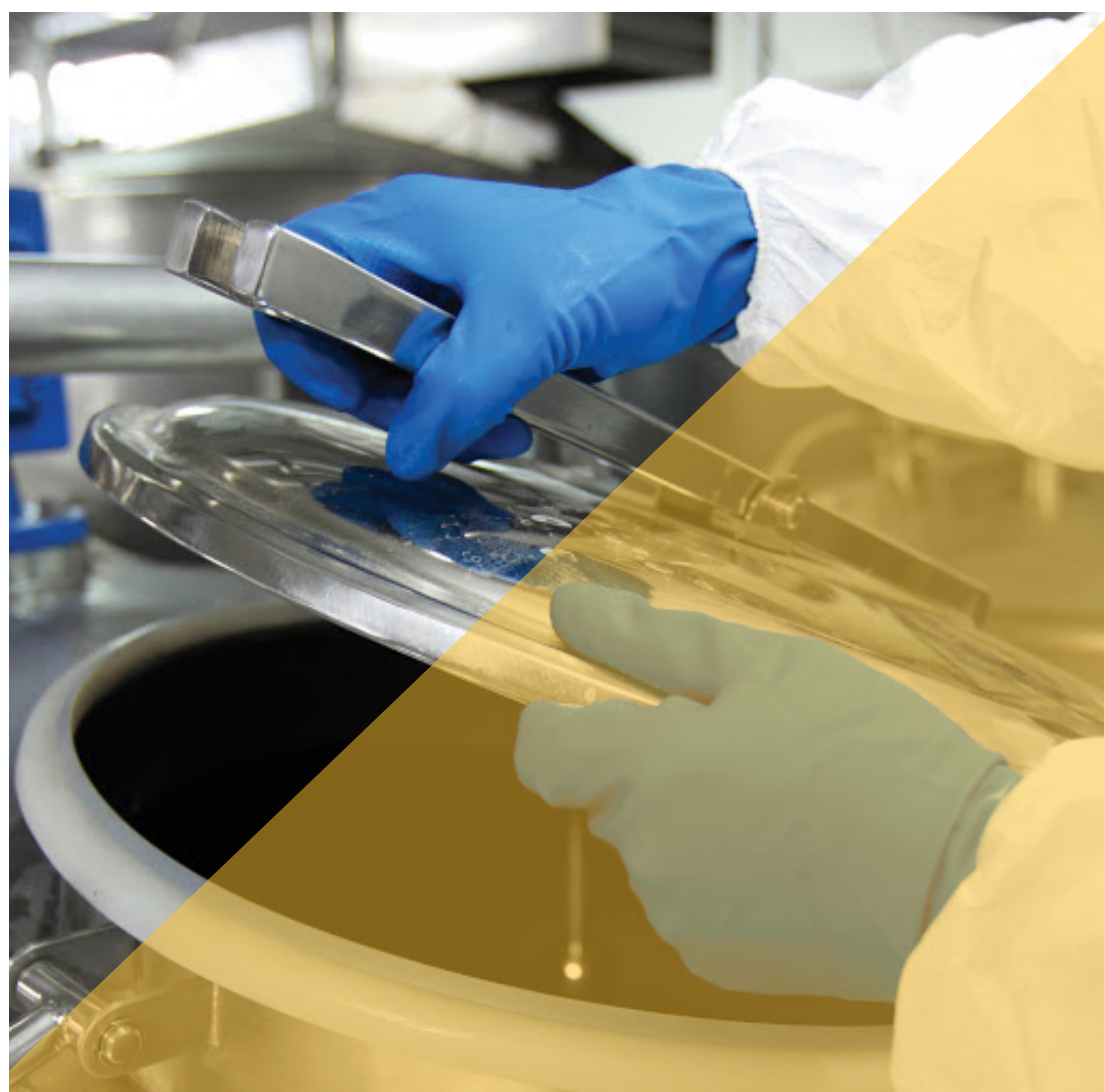


## REGISTERED ADDRESS

LANE NO. 2, LUXMI INDUSTRIAL PARK,  
SAIDPURA, DERA BASSI MOHALI,  
PUNJAB, 140507  
BUSINESS HOURS  
9AM - 8PM  
MONDAYS TO FRIDAYS

## ACCOUNTS OFFICE

1108 / 2 SECOND FLOOR  
HIG FLATS , SECTOR 39B  
CHANDIGARH, 160036  
BUSINESS HOURS  
9AM-6PM



2021 - 2022 CATALOGUE